

# Product Accessories

## 产品配件

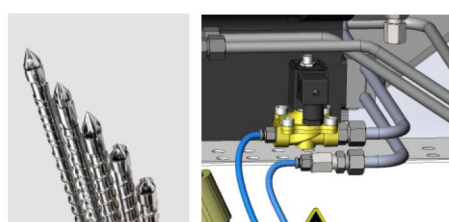
TMII通用型精密伺服注塑机 90T-470T

TMII general-purpose precision servo-driven injection molding machine 90T-470T



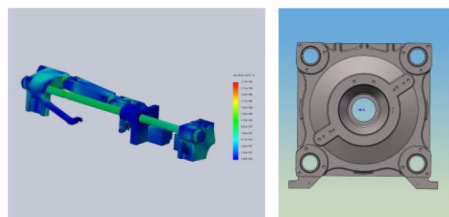
标配KEBA电脑、菲仕电机、台达驱动，搭配自研控制程序，生产控制更精准。

Standard KEBA controller, PHASE motor, DELTA drive, with self-developed control program, more precise production control.



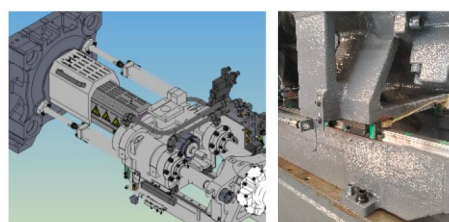
标配电镀螺杆、下料口温度控制，生产效率更高，适用胶料范围更广。

Standard configuration of plating screw and temperature control of the offload, higher production efficiency, and wider application range of rubber materials.



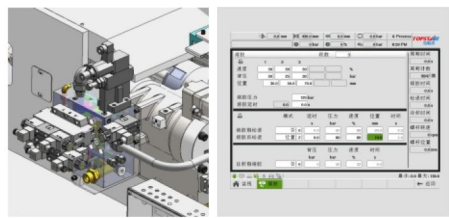
优化锁模设计，强度更高更稳定。

Optimized clamping design, higher strength and more stable.



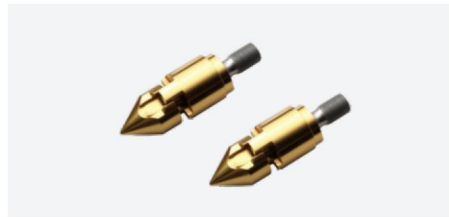
采用斜排双射移油缸及线性导轨，射胶更加精准稳定。

Diagonal double carriage cylinders and linear guide, more accurate and stable injection.



预塑采用比例背压控制，操作简便，可实现多段背压设置，精度更高，提高塑化品质。

Pre-plasticizing adopts proportional back pressure control, easy to operate. Multi-stage back pressure setting can be realized, with higher precision and improved plasticization quality.



精密的PVD合金三小件，适应更广泛的塑化要求。

Precision PVD alloy screw head set, adapt to a wider range of plasticizing requirements.

# Product Features

## 产品特点



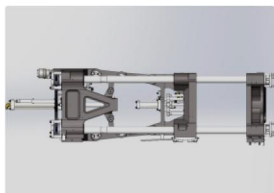
开模位置自动补偿功能，配合机械手精准抓取；

Automatic compensation function of mold opening position, cooperate with manipulator to grasp accurately;

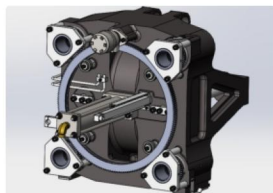


拓斯达注塑机和辅机系统高度集成，操作便捷高效。

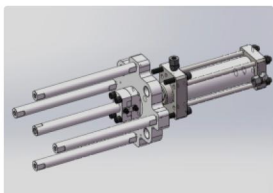
TOPSTAR injection molding machine and auxiliary system are highly integrated, convenient and efficient operation.



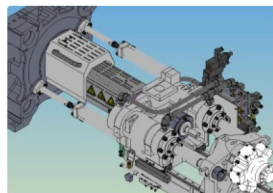
全新斜排机铰布局，可实现超长行程开模，开模位置精度  $< \pm 1\text{mm}$ ，模板运动又快又稳；  
The new inclined row machine toggle layout can realize super long stroke mold opening, the mold opening position accuracy is less than  $\pm 1\text{mm}$ , and the mold movement is fast and stable;



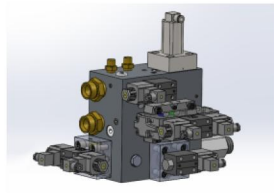
全新的调模机构，一键即可实现自动精准调模；  
New mold adjustment mechanism, with one-key function available to realize automatic and accurate mold adjustment;



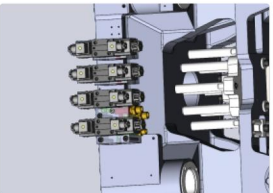
顶针推力加大20%，有利于连接件、插件类产品脱模，适用性更广；  
The thrust of thimble is increased by 20%, which is conducive to demoulding of connector and plug-in products, and has wider applicability;



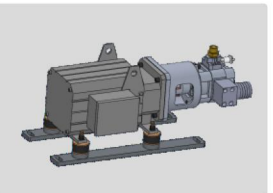
双射移搭配线性导轨，射台运动阻力小，动作灵敏，射胶精准稳定；  
Double linear guide rails for carriage movement, small motion resistance of shooting platform, sensitive action, accurate and stable injection;



油路系统全面升级，安全，稳定，功能全，差动锁模运行速度快；  
Oil circuit system fully upgraded, safe, stable, full-featured, with fast operation cycle of differential clamping;



抽芯油阀模组化设计，自由搭配抽芯组数；  
Modular core pulling oil valve design, free to match the number or core pullings;



伺服动力提升20%，射速提升20%，熔胶转速提升10%，综合效率提升15%；  
ervo power increased by 20%, injection speed increased by 20%, plasticizing speed increased by 10%, and comprehensive efficiency increased by 15%;



控制系统二次开发，电脑操作界面人性化设计；  
Secondary development of control system and humanized design of computer operation interface;